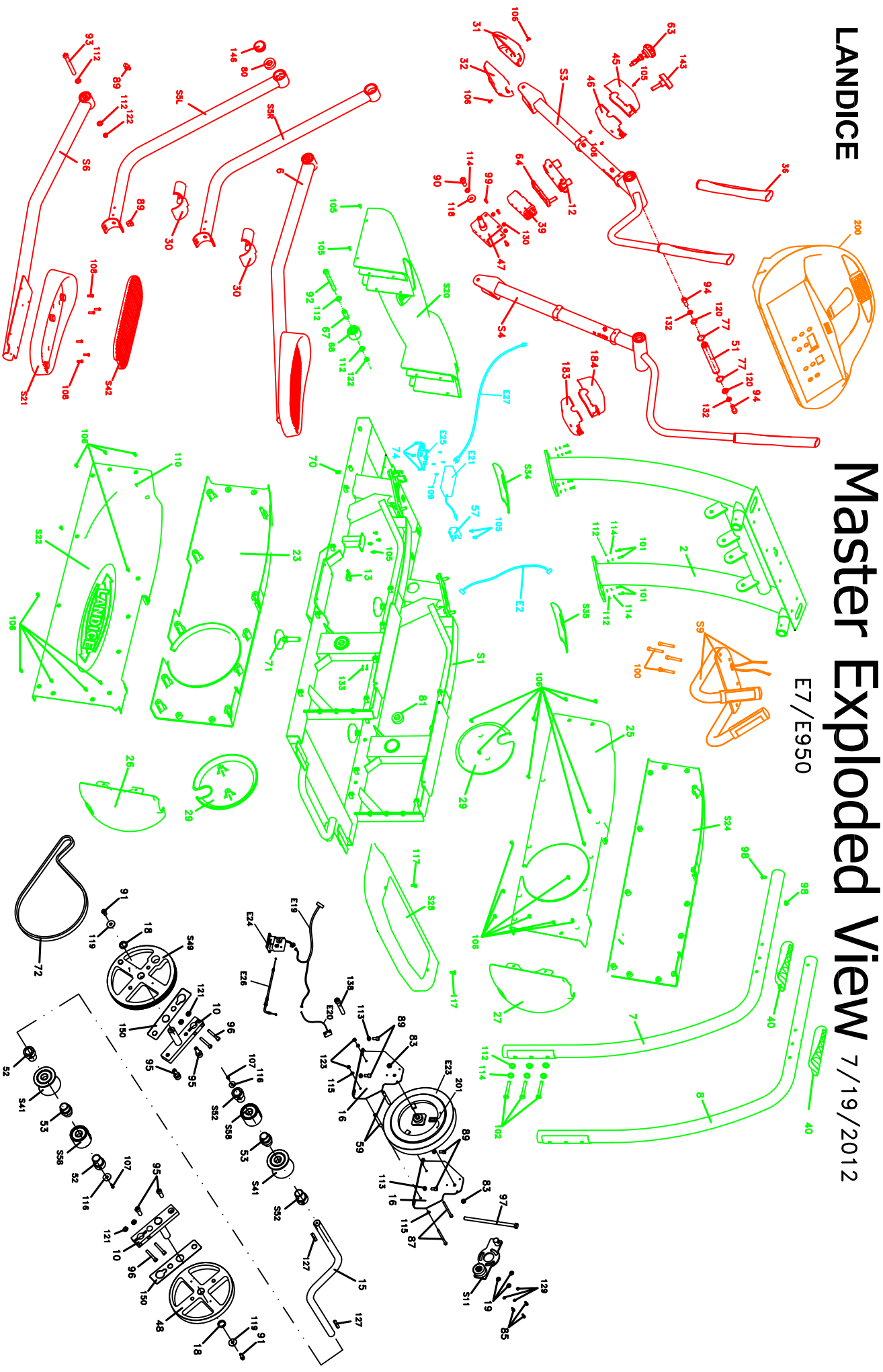


LANDICE

# Master Exploded View 7/19/2012

E7/E950



**LANDICE - E-SERIES ELLIPTIMILL PART # WITH EXPLODED VIEW #**

E7 / E950

October 23, 2012

**FRAME & SHROUD COMPONENTS**

Model	Item	Part Number	View #	Notes
E7/E950	Frame, E7/E950	91059	S1	<b>NOT AVAIL FOR PURCHASE</b>
E7/E950	Crank house bearing (Crank/Spindle)	91213	81	4 per Frame
E7/E950	Screw Clip (M5)	91070	70	
E7/E950	M5 x 10 Phillips Pan Head Mounting Screw	M5x10_PP HMS	105	Brake Motor Screw / 4 total
E7/E950	Tension Bolt Stop	91088	13	
E7/E950	M3.5 x 13 Self Tapping Screw	M3.5X13_PP HTS	133	
E7/E950	Wheel	91081	S68	
E7/E950	Wheel Sleeve	91080	67	
E7/E950	M10 x 65 Socket Head Cap Screw	M10x65_SHCS	92	Wheel Bolt 1 per side
E7/E950	M10 Lock Nut <b>**ORDER TOGETHER**</b>	M10_LOCK_NUT	122	
E7/E950	M10 Washer	M10_WASH	112	
E7/E950	Shroud Cover, Front (with clips)	91038	S20	
E7/E950	M5 x 10 Phillips Pan Head Mounting Screw	M5x10_PP HMS	105	For Shroud Cover & Side Shroud
Shroud Cover each side = 2 inside & 4 outside				
E7/E950	Rear - Step	91002	S28	
E7/E950	Step - Rehabilitation	92027		
E7/E950	M6 x 25 Socket Head Cap Screw	M6x25_SHCS	117	Rear Step Screw / 2 total
E7/E950	Leveling Foot	91067	71	3 per side
E7/E950	Shroud Cover, Inside Right	91031	25	
E7/E950	Shroud Cover, Outside Right	91033	S24	
E7/E950	Shroud Cover, Inside Left	91032	23	
E7/E950	Shroud Cover, Outside Left	91034	S22	
E7/E950	M4 x 13 Phillips Pan Head Tapping Screw	M4x13_PP HTS	110	1 each side
E7/E950	M5 x 15 Phillips Pan Head Machine Screw	M5x15_PP HMS	106	For Side Shroud & Shroud Cover
Shroud each side = 9 inside & 8 outside				
E7/E950	End Cap, Frame-Right (with clips)	91035	26	
E7/E950	End Cap, Frame-Left (with clips)	91036	27	
E7/E950	Shroud Disc	91037	29	1 each side

**UPRIGHT AREA COMPONENTS**

Model	Item	Part Number	View #	Notes
E7/E950	Upright Tower	91072	2	
E7/E950	Upright Mounting Cover, Right	91039	S34	
E7/E950	Upright Mounting Cover, Left	91040	S35	
E7/E950	M10 Washer	M10_WASH	112	2 per side
E7/E950	M10 Spring Washer	M10_S_WASH	114	2 per side
E7/E950	M10 x 30 Hex Head Bolt	M10X30_H HB	101	2 per side

**STATIONARY HANDRAIL COMPONENTS**

Model	Item	Part Number	View #	Notes
E7/E950	Side Handrail, Right (Stationary)	91203	8	
E7/E950	Side Handrail, Left (Stationary)	91204	7	
E7/E950	M8 x 15 Button head Cap Screw	M8x15_BHCS	98	Top Handrail Bolt / 2 per side
E7/E950	M10 Washer	M10_WASH	112	
E7/E950	M10 Spring Washer	M10_S_WASH	114	
E7/E950	M10 x 7 Hex Head Bolt	M10x7_H HB	102	Btm Handrail Bolt / 2 per side
E7/E950	Grip, Side Handrail, left or right (Stationary)	91205	40	

**CONTACT HEART RATE SYSTEM**

Model	Item	Part Number	View #	Notes
E7/E950	Contact Heart rate Grip Assembly	91206	S9	
E7/E950	M8 x 60 Hex Head Bolt	M8x60_H HB	100	
E7/E950	HRC Dual Mode RECEIVER, ElliptiMill	82005		Goes behind control panel

**LANDICE - E-SERIES ELLIPTIMILL PART # WITH EXPLODED VIEW #****E7 / E950****October 23, 2012****LOWER ELECTRONICS**

Model	Item	Part Number	View #	Notes
E7/E950	Relay Board, Main Power	91085	E25	
E7/E950	Bushing, M3 x 7.8, Plastic	91086	74	
E7/E950	Speed Sensor	91069	E20	
E7/E950	Transformer, AC (110 or 220V)	91083	E21	
E7/E950	Transformer Mounting Bracket	91084	57	
E7/E950	M5 x 10 Phillips Pan Head Mounting Screw	M5x10_PPHMS	105	For Shroud Cover & Side Shroud
E7/E950	M3 x 16 Phillips Pan Head Mounting Screw	M3x16_PPHMS	109	For Relay Board / 4 total

**DISPLAY BOARDS & MEMBRANES**

Model	Item	Part Number	View #	Notes
E7/E950	Display Board, (ET-2)	82003		Executive
E7/E950	Display Board, (CT-4)	82050		Cardio
E7/E950	Display Board, (PST-4)	82052		Pro Sport
E7/E950	Display Board, (PT-2)	82008		Pro
E7/E950	Display Board, REHABILITATION	82008-RET		
E7/E950	Membrane Panel, (ET-2)	82001		Executive
E7/E950	Membrane Panel, (CT-4)	82051		Cardio
E7/E950	Membrane Panel, (PST-4)	82053		Pro Sport
E7/E950	FACEPLATE, REHABILITATION, ISOKINETIC	82060		
E7/E950	Faceplate, Pro (PT-2)	82007		
E7/E950	Sealing Tape, for Faceplate	70537-W		
E7/E950	Velcro Strip (For Membrane and Faceplate)	70095H		

**DISPLAY ACCESSORIES**

Model	Item	Part Number	View #	Notes
E7/E950	LCD Display, Executive Trainer 2, color	70584-V5		
E8/E950	Pulse Belt	70072		
E8/E950	Pulse Transmitter, Long Range	70073		
E8/E950	Pulse Cable, non CHR only (PBC)	70313		
E8/E950	Cardio-Gel	71043		

**HARNESSES & POWER CORDS**

Model	Item	Part Number	View #	Notes
E7/E950	Line Cord, Plug in, 110V	70530	E27	
E950	Line Cord, Plug in, 220V	70531	E27	
E7/E950	Harness, Upper (Pod)	91071	E2	

**LANDICE - E-SERIES ELLIPTIMILL PART # WITH EXPLODED VIEW #****E7 / E950****October 23, 2012**

<b>STRIDE COMPONENTS</b>				
Model	Item	Part Number	View #	Notes
E7/E950	Stride Arm - Left	91047	S3	
E7/E950	Stride Arm Cover - Outside ( Left )	91043	45	
E7/E950	Stride Arm Cover - Inside ( Left )	91044	46	
E7/E950	Stride Arm - Right	91048	S4	
E7/E950	Stride Arm Cover - Outside ( Right )	91045	184	
E7/E950	Stride Arm Cover - Inside ( Right )	91046	183	
E7/E950	Grip, Moving Handrail (Stride Arm)	91073	36	
E7/E950	Stride Adjusting Knob	91041	63	
E7/E950	Stride Adjusting T-Handle	91042	143	
E7/E950	M5 x 10 Phillips Pan Head Mounting Screw	M5x10_PPHMS	105	For Stride Cover / 3 per side
E7/E950	Knuckle Cover, Outside - Same left and right sides	91049	31	
E7/E950	Knuckle Cover, Inside - Same left and right sides	91050	32	
E7/E950	M5 x 15 Phillips Pan Head Machine Screw	M5x15_PPHMS	106	2 per side
E7/E950	Stride Arm Axle Shaft	91078	51	
E7/E950	Shaft Clip M16	91089	86	
E7/E950	Stride Arm, Shaft Clip M25	91079	77	
E7/E950	M12 Washer (Stride Arm)	M12_WASH	120	
E7/E950	M12 Spring Washer (Stride Arm)	M12_S_WASH	132	
E7/E950	M12 x 30 Hex Head Bolt (Stride Arm)	M12x30_HHB	94	Mounting bolts - 2 per side
E7/E950	Stride Block, Inner	91074	47	
E7/E950	M8 x 20 Socket Head Cap Screw	M8x20_SHCS	99	
E7/E950	M10 x 25 Socket Head Cap Screw	M10x25_SHCS	90	
E7/E950	M10 Spring Washer	M10_S_WASH	114	
E7/E950	M10 Fender Washer	M10_F_WASH	118	
E7/E950	M8 Lock Nut	M8_LOCK_NUT	130	
E7/E950	Stride Plate	91077	64	
E7/E950	Stride Block, Outer	91075	12	
E7/E950	Stride Sleeve	91076	39	

<b>PEDAL COMPONENTS</b>				
Model	Item	Part Number	View #	Notes
E7/E950	Pedal Tube Assembly **(includes 3 items below)	91066	S6	
E7/E950	Pedal Tube *	91062	6	
E7/E950	Pedal w/Velcro **	91063	S21	
E7/E950	Gel Insert, Foot Pedal w/Velcro***	91064	S42	
E7/E950	M10 x 85 Socket Head Cap Screw	M10x85_SHCS	93	
E7/E950	M10 Lock Nut	M10_LOCK_NUT	122	
E7/E950	M10 Washer	M10_WASH	112	
E7/E950	M6 x 16 Phillips Pan Head Machine Screw	M6x16_PPHMS	108	

<b>CRANK ARM COMPONENTS</b>				
Model	Item	Part Number	View #	Notes
E7/E950	Crank Arm, Left - with bearing	91052	S5L	
E7/E950	Crank Arm, Right - with bearing	91053	S5R	
E7/E950	Upper Crank Arm Bearing	91212	80	
E7/E950	M8 x 16 Socket Head Cap Screw	M8x16_SHCS	89	Crank Bearing Bolt / 4 per side
E7/E950	Crank Arm Cover, snap on (same left and right side)	91054	30	
E7/E950	Crank Arm Finishing Plug	91051	146	

**LANDICE - E-SERIES ELLIPTIMILL PART # WITH EXPLODED VIEW #****E7 / E950****October 23, 2012**

<b>CRANK &amp; BRAKE COMPONENTS</b>				
<b>Model</b>	<b>Item</b>	<b>Part Number</b>	<b>View #</b>	<b>Notes</b>
E7/E950	Crank, Shaft	91061	15	
E7/E950	Key, Crank Shaft	91060	127	
E7/E950	Crank Assembly	91300		
E7/E950	Crank Wheel, Non-Pulley	91209	48	
E7/E950	Crank Wheel, Pulley	91210	S49	
E7/E950	Spindle	91207	10	2 per ElliptiMill
E7/E950	Spindle Spacer, Zinc Plated	91211	18	
E7/E950	M10 Fender Washer, Black Oxide	M10_F_WASH	119	
E7/E950	M10 x 20 Socket Head Cap Screw	M10x20_SHCS	91	
E7/E950	Spindle ISO Damper	91208	150	
E7/E950	Sleeve, Crank Bearing, Outside	91056	S52	2 per ElliptiMill
E7/E950	Sleeve, Crank Bearing, Inside	91057	53	2 per ElliptiMill
E7/E950	Bearing, Crank	91058	S58	
E7/E950	M6 Fender Washer	M6_F_WASH	116	
E7/E950	M6 x 12 Phillips Pan Head Machine Screw	M6x12_PPHMS	107	
E7/E950	Pedal Roller (with bearings)	91030	S41	2 per ElliptiMill
E7/E950	M12 x 30 Socket Head Cap Screw	M12x30_SHCS	95	4 per ElliptiMill
E7/E950	M12 x 55 Socket Head Cap Screw	M12x55_SHCS	96	4 per ElliptiMill
E7/E950	M12 Lock Nut, Nylon	M12_LOCK_NUT	121	
E7/E950	Drive Belt (Sixe 460-J)	91092	72	
E7/E950	Magnetic Brake (Flywheel)	91200	E23	
E7/E950	Magnetic Brake Bracket	91201	16	
E7/E950	Cable, Brake Assembly Magnetic Flywheel	91093	201	
E7/E950	Cable, Brake Assembly w/Turnbuckle	91097	E26	
E7/E950	Brake Motor	91065	E24	
E7/E950	Harness, Brake Motor	91068	E19	
E7/E950	M8 Spring Washer	M8_S_WASH	113	
E7/E950	M8 x 16 Socket Head Cap Screw	M8x16_SHCS	89	
E7/E950	M6 x 100 Socket Head Cap Screw	M6x10_SHCS	87	
E7/E950	M6 Washer	M6_WASH	115	
E7/E950	Bushing, M6	91202	59	
E7/E950	M6 Lock Nut	M6_LOCK_NUT	123	
E7/E950	Tension Bolt	91087	97	
E7/E950	Bolt, 3/8_26 Hex Head Bolt	3/8_26_HHB	83	
E7/E950	M8 x 40 Socket Head Cap Screw	M8x40_SHCS	138	
E7/E950	Idler Assembly	91091	S11	
E7/E950	Bushing, M5 x 7, Flanged, Metal	91090	19	
E7/E950	M5 x 12 Socket Head Cap Screw	M5x12_SHCS	85	
E7/E950	Shaft Clip M16	91089	86	
E7/E950	M5 Spring Washer	M5_S_WASH	129	

**LANDICE - E-SERIES ELLIPTIMILL PART # WITH EXPLODED VIEW #****E7 / E950****October 23, 2012****LANDICE VISION SYSTEM (LVS15) 15" (Digital) approx. 05/2010**

Model	Item	Part Number	View #	Notes
E7/E950	LVS 15" (replacement of existing 15")	LVS15-E		
E7/E950	LVS 15" Upgrade from 12" LVS	LVS15-FIELD		Only for upgrade
E7/E950	LVS 15", DVD Player, Spare Part	70705		
E7/E950	LVS 15" Headphone Extension	70708		
E7/E950	Line cord, Splitter (Y), 14", LVS15-E	92020		Plugs in at Base
E7/E950	Line cord Extender, 10', LVS15-E	92021		Route Cord Outside
E7/E950	Instructions, Assembly LVS15-E on E7/E950	92024		
E7/E950	Vesa-D Bracket, Assembly	70673		
E7/E950	iPod A/V Video Cable Assembly	70684		

**TABLET BRACKET**

Model	Item	Part Number	View #	Notes
E7/E950	Table Bracket Assembly, 10", ElliptiMill	70840-E		
E7/E950	Tablet Bracket Assembly, 7", ElliptiMill	70840-7-E		
E7/E950	Tablet Dock Assembly, 10" Dock ( Ball and Grip)	70837		
E7/E950	Tablet Dock Assembly, 7" Dock (Ball and Grip)	70837-7		

Landice ElliptiMill E7/E950 Dealer/Technical Parts Listing

**LANDICE - E-SERIES ELLIPTIMILL PART # WITH EXPLODED VIEW #**

**E7 / E950**

**October 23, 2012**

**HIGH TECH ENTERTAINMENT CENTER COMPONENTS**

Model	Item	Part Number	View #	Notes
	Pod Assembly (view #200 on MASTER exploded view)	91100	200	includes all parts below
*** VIEW #'S BELOW FROM CATEGORY EXPLODED VIEW***				
E7/E950	Pod Top	91119	151	
E7/E950	Pod Bottom	91118	152	
E7/E950	M4 x 12 Phillips Pan Head Tapping Screw	M4x10_PPHTS	176	16 per Pod Bottom
E7/E950	M4 x 13 Phillips Pan Head Tapping Screw	M4X13_PPHTS	172	
E7/E950	Pod Inner Mounting Plate	91132	14	
E7/E950	M8 x 20 Hex Head Bolt	M8x20_HHB	104	4 per Plate
E7/E950	Membrane Channel Support Bottom	91101	166	
E7/E950	Membrane Channel Support Top	91102	165	
E7/E950	Screw for Channel Support and Board - tapping screw	M3x9_PPHTS	169	
E7/E950	Velcro Strip 26 1/4"X 3/16" Loop	70095L	175	
E7/E950	Plug - 1" Snap	91117	160	
E7/E950	Pod Grip	70543	180	

**FAN AND SPEAKERS**

Model	Item	Part Number	View #	Notes
E7/E950	Fan Diverter Control Assembly (INCLUDES 8 ITEMS BELOW)	70828		
	Diverter, Fan	91125	158	
	Diverter, Retaining bracket	91126	159	
	Diverter, Clip	91127	164	
	Pod Control Housing	91128	153	
	Fan Control Board	91122	E15	
	Volume Control Board	91121	E14	
	M3 x 8 Phillips Pan Head Tapping Screw (2)	M3X8_PPHTS	171	
	Speaker Enclosure Screws (Phillips Pan Head Tapping Screw)	M3x10_PPHTS	169	
E7/E950	Fan	91120	E4	
E7/E950	Fan Vent	91131	S154	
E7/E950	Fan Vent Screws , (Phillips Pan Head Tapping Screw)	M3x15_PPHTS	170	4 per Fan Vent
E7/E950	Fan Control Board	91122	E15	
E7/E950	M3 x 8 Phillips Pan Head Tapping Screw	M3X8_PPHTS	171	
E7/E950	Speakers (Can be used for left and right)	91105	E5	Can be used as left or right
E7/E950	Speaker - "O" ring	91115	161	
E7/E950	Speaker Cover (Bezel) - Right	91103	S163	
E7/E950	Speaker Cover (Bezel) - Left	91104	S162	
E7/E950	Speaker Enclosure, Right	91129	157	
E7/E950	Speaker Enclosure, Left	91130	156	
E7/E950	Speaker Enclosure Screws (Phillips Pan Head Tapping Screw)	M3x10_PPHTS	169	
E7/E950	Relay Board (Fan & Speakers) (Pod & Fan)	91116	E7	
E7/E950	Volume Control Board	91121	E14	
E7/E950	Amplifier	91107	E6	

**HARNESS**

E7/E950	Harness - Upper (ElliptiMill)	91071	E2	
E7/E950	Harness - Volume Control (Relay to Controls)	91123	E10	
E7/E950	Harness - Volume Control (Amp to Pwr Supply)	91108	E9	
E7/E950	Harness - Fan Control (Relay to Controls)	91124	E11	
E7/E950	Harness - Power (Relay to Amp)	91109	E12	
E7/E950	Harness - Input (Relay to Amp)	91110	E13	
E7/E950	Harness - Speaker	91106	E16	
E7/E950	Harness - iPod	91113	E17	
E7/E950	Harness - Pod Accessories - Box Connector	70683		
E7/E950	Harness - MP3	91112	E8	